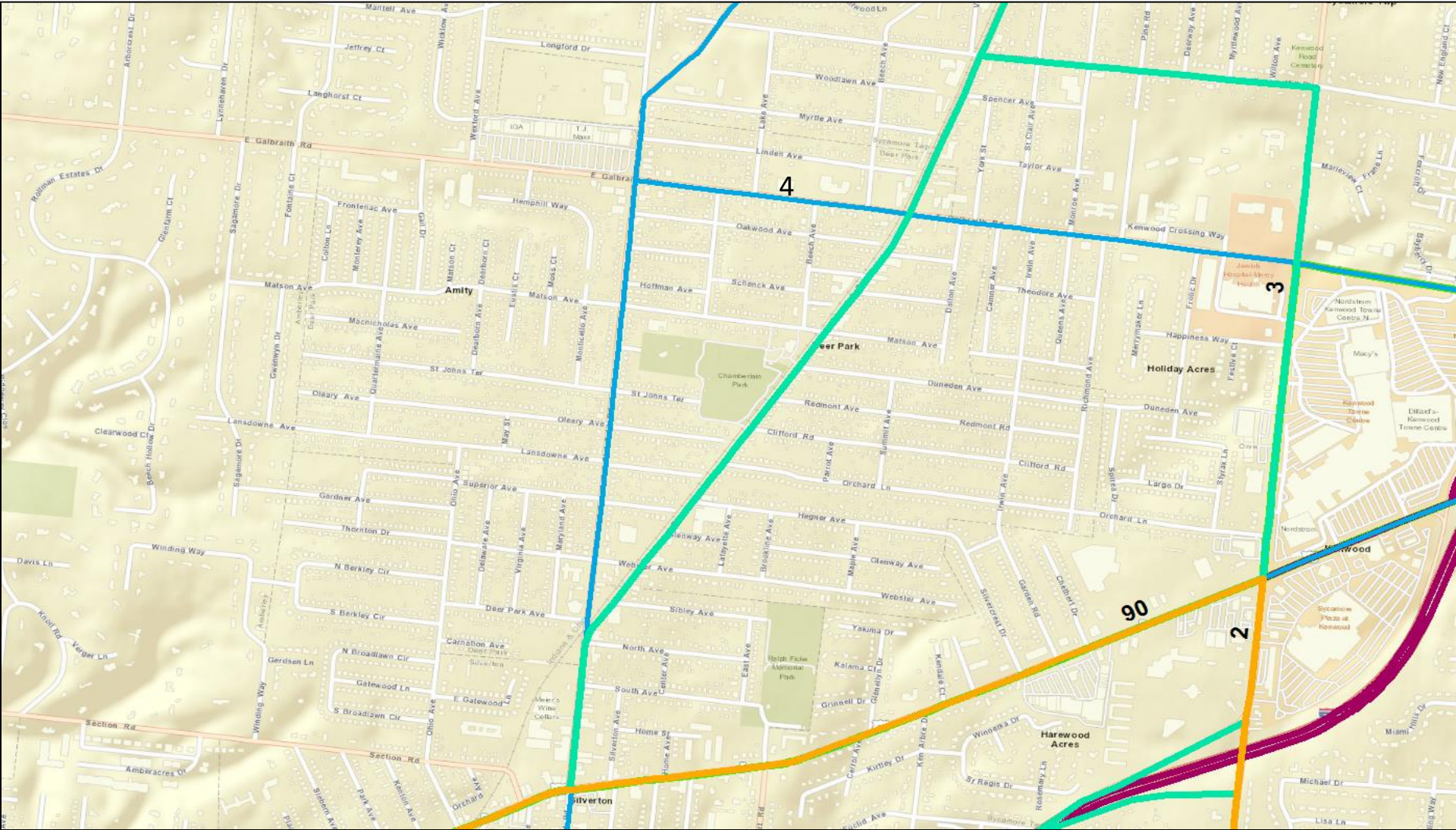


# *Current Routes Serving:* Deer Park

May 29, 2019

# Deer Park: All Routes —current



# Service Improvements within Deer Park

Type of Improvement	Routes Affected in Each Year			
	1 st Year	2nd Year	3rd Year	4th Year
Increased Weekday Span			2X, 3/3X	
New Weekday Service				
Route Extension		4		
24-Hour Weekday Service	4			
Improved Peak Headway			2X, 3/3X	4
Improved Midday Headway			3/3X	4
Improved Evening Headway				
Improved Saturday Span				
24-Hour Saturday Service	4			
Improved Saturday Headway				
New Saturday Service				
Improved Sunday Span				
24-Hour Sunday Service	4			
Improved Sunday Headway				
New Sunday Service				
New Circulator (on-demand)				

\*For more information, see Proposed System Changes by Route