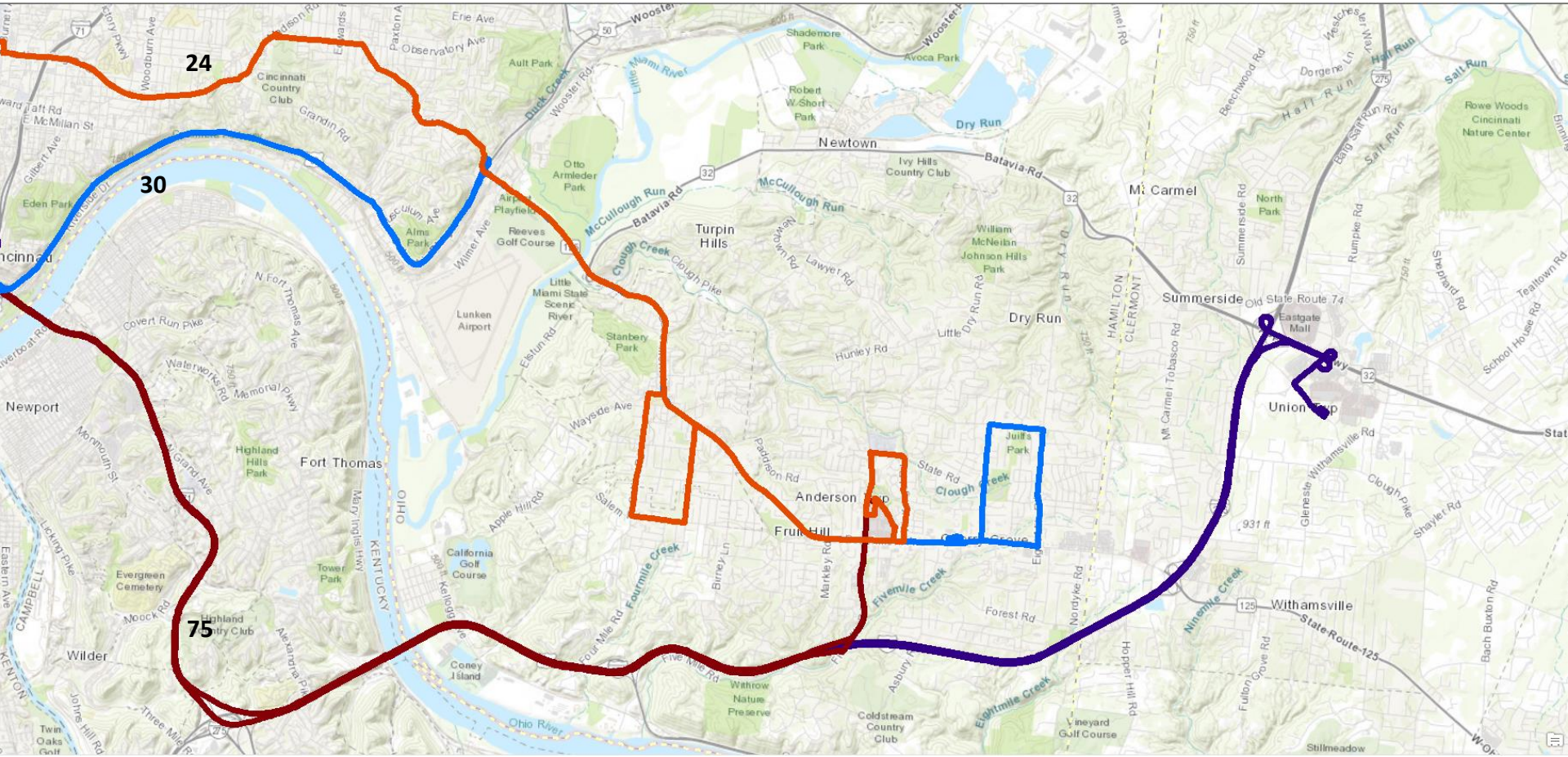


Current Routes Serving: **ANDERSON**

April 18, 2019

Anderson : All Routes—current



Type of Improvement	Routes Affected in Each Year			
	1st Year	2nd Year	3rd Year	4th Year
Increased Weekday Span			30/75	
New Weekday Service				
Route Extension				24
24-Hour Weekday Service				
Improved Peak Headway			30/75	
Improved Midday Headway				
Improved Evening Headway			75	
Improved Saturday Span				
24-Hour Saturday Service				
Improved Saturday Headway				24
New Saturday Service				
Improved Sunday Span				
24-Hour Sunday Service				
Improved Sunday Headway				24
New Sunday Service				
New Circulator (on-demand)				

*For more information, see Proposed System Changes by Route